



## WEATHERBEATER™ FLOOR LINERS CARE AND USE INSTRUCTIONS

PT #1476

Thank you for selecting a WeatherBeater® Floor Liner from Husky Liners. Your new rear floor liner is custom molded to fit your Ford Explorer. The liner is made to take the place of your factory floor mats. **For correct fit, it is necessary to remove the factory floor mats before installing your new floor liners.** However, do not remove the factory-installed carpeting.

Your liner is made from an engineering resin that is lightweight and extremely tough and durable. The easiest way to clean your liner is with a damp cloth or sponge. If using a cleaner, 409® or Glass Plus® work well. Use of Armor All®, Son-of-a-Gun® or similar items is discouraged as these products make the liner slick.

### INSTALLATION INSTRUCTIONS FOR YOUR FORD EXPLORER SECOND SEAT FLOOR LINER



TO EASE INSTALLATION OF YOUR NEW 2<sup>ND</sup> SEAT LINER, MOVE BOTH FRONT ROW SEATS TO THEIR MOST FORWARD POSITION. WITH THAT DONE, INSTALL THE LINER AS SHOWN ABOVE. THE LINER PACKAGING INCLUDES TWO RETENTION CLIPS TO SECURE THE LINER IN PLACE. PLEASE SEE THE BACK OF THIS PAGE FOR CLIP INSTALLATION INSTRUCTIONS.

IF YOUR EXPLORER HAS 2<sup>ND</sup> ROW BUCKET SEATS WITH A CONSOLE LOCATED BETWEEN THE 2<sup>ND</sup> ROW SEATS, YOU WILL NEED TO TRIM YOUR LINER TO ACCOMMODATE THE OPTIONAL CONSOLE. THE TRIM INSTRUCTIONS ARE INCLUDE ON THE FOLLOWING PAGE AS WELL.

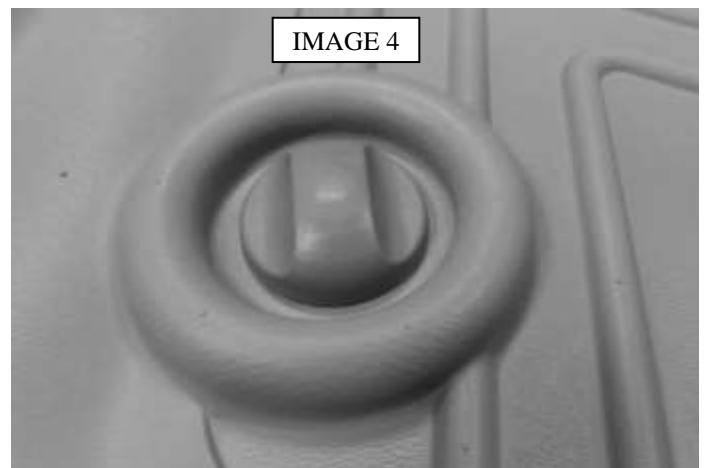
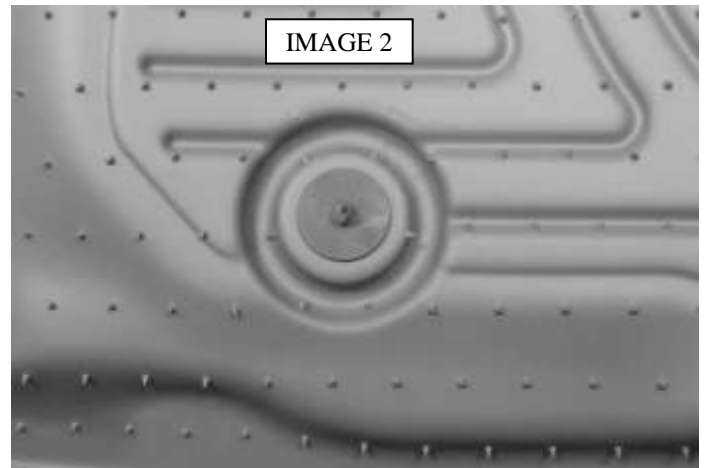
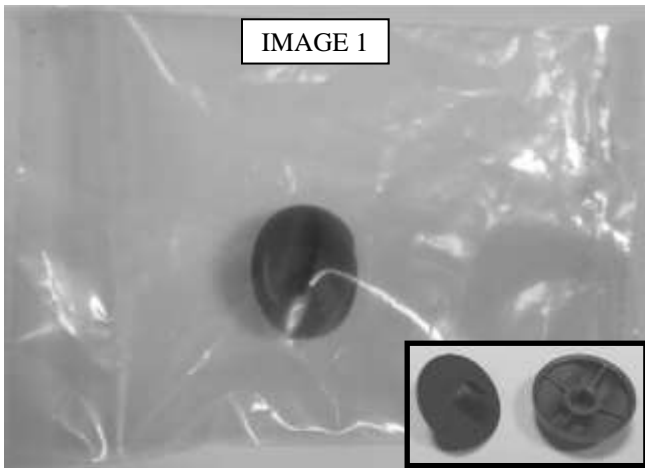


## WEATHERBEATER™ FLOOR LINERS

PT #1476

### RETENTION CLIP INSTALLATION INSTRUCTIONS

IN YOUR PACKAGING YOU WILL FIND TWO BAGGED RETENTION CLIPS THAT WILL BE USED TO SECURE THE 2<sup>ND</sup> SEAT IN PLACE. ONCE YOU HAVE LOCATED THE FASTENERS IN YOUR PACKAGING, REMOVE THEM AND UNSCREW THE CAP FROM THE BASE (SEE IMAGE 1 BELOW). NEXT INSERT THE LINER IN THE VEHICLE, POSITIONING IN PLACE. WITH THE LINER IN PLACE, LIFT EITHER SIDE AND INSERT THE THREADED PORTION OF THE BASE THROUGH THE LINER (INSERT FROM THE BACK SIDE OF THE LINER AS SHOWN IN IMAGE 2 BELOW). WITH THIS DONE CHECK THE POSITION OF THE LINER POSITION THE LINER AND THEN, USING A COIN, SCREWDRIVER OR SIMILAR, SCREW THE BASE OF THE FASTENERS INTO THE CARPETING (SEE IMAGE 3). REPEAT ON THE OPPOSITE SIDE. LASTLY, AS SHOWN IN IMAGE 4, INSTALL THE CAPS ONTO THE BASES. TIGHTEN UNTIL THE CAPS MEETS RESISTANCE, DO NOT OVER TIGHTEN.





## WEATHERBEATER™ FLOOR LINERS

PT #1476

### 2<sup>ND</sup> ROW CONSOLE TRIM INSTRUCTIONS

IF YOUR VEHICLE HAS A 2<sup>ND</sup> ROW CONSOLE, A TRIM IS NEEDED TO ACHIEVE THE PROPER FIT. LINER HAS A MOLDED IN TO GUIDE THE TRIM. USE A PAIR OF HEAVY SHEARS OR UTILITY KNIFE AND REMOVE THE MATERIAL INSIDE OF THE MOLDED IN STEP THAT DEFINES THE TRIM. THE FIRST IMAGE BELOW SHOWS A CLOSE UP OF THE TRIM AREA AND THE 2<sup>ND</sup> IMAGE SHOWS THE AREA REMOVED.

